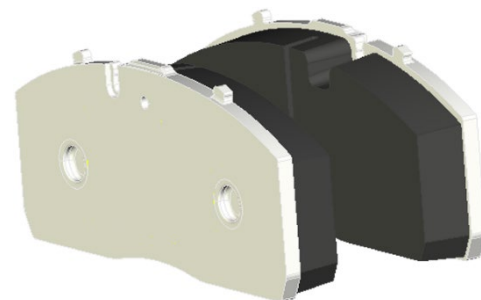


Series introduction of brake pad quality SAF 577 in the trailer disc brake SBS 2220 H01 from July 2021.

In the course of continuous product development and optimization, SAF-HOLLAND will introduce the new SAF 577 brake pad quality in the SBS 2220 H01 disc brake.

The following axle types are affected:

B9-22S, BL9-22S, BLL9-22S, BI9-22S, BIL9-22S, BILL9-22S, BIZL9-22S, BIM9-22S, BI10-22S, SI9-22S, ZI9-22S



Properties of the new brake pad quality

- High friction value stability over the entire service life
- High friction value stability in relation to temperature, speed and pressure
- Balanced wear behavior

Changeover date: July 2021

Important note: Adjustments to existing system and vehicle approvals will be necessary

For the amendment of existing system and vehicle approvals, we provide the test protocol TDB0843 in an amended version. With the update of the test report TDB0843, test code B (20130312) was marked as inactive and test code C (20200731) was newly included to document the lining quality SAF 577. Based on the data provided, the required brake calculations can be created.

The current test report TDB 0843 can be found on the SAF-HOLLAND website in the Sales / Expert Opinions section. (<http://www.safholland.org/testreports/>).

All axles with brake type SBS 2220 H01 will automatically be equipped with the SAF 577 lining from July 2021. Please ensure that your system and vehicle approvals are adjusted accordingly by this date.