

NORMA Signage Clamps

Pricelist 2015



NORMA Signage Clamps - Hi-Torque Clamp

Description

The Hi-Torque Signage Clamp is produced using components entirely manufactured from stainless steel. The construction of the worm-drive housing on the band facilitates installation of a wide range of signs. Hi-Torque clamps are reusable and easy to retighten after expansion caused by temperature fluctuations, and their construction ensures that during installation there are no sharp edges which might cause injury to the installer. The recommended tightening torque for secure and reliable installation is 16 Nm and the breaking torque is more than 20 Nm.

Benefits

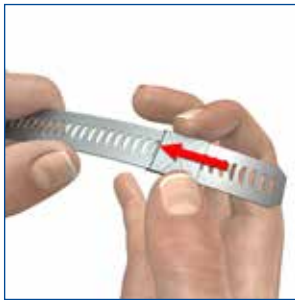
- Suitable for installing traffic signs, street signs, billboards and illuminated signs
- Reusable
- Secure and reliable installation
- Easy to retighten in cases of expansion (due to temperature fluctuations)
- No loss of material when installing
- Easy installation of two signs on one pole

Hi-Torque clamp

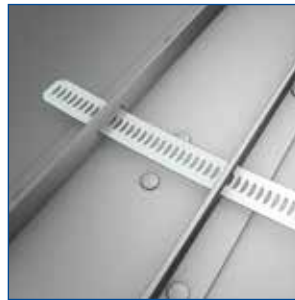


NORMACLAMP® HI-TORQUE				
Band Width in mm	Designation	Product Nr	PU	Price in € per pce.
15,7	Hi-Torque HP2 / 32-67mm	0560 6610 050	400	430,00
15,7	Hi-Torque HP3 / 54-105mm	0560 6610 080	200	465,10
15,7	Hi-Torque HP4 / 102-156mm	0560 6610 129	130	548,70
15,7	Hi-Torque HP5 / 156-232mm	0560 6610 194	75	659,30
15,7	Hi-Torque HP6 / 229-384mm	0560 6610 307	50	992,70

Installation notice



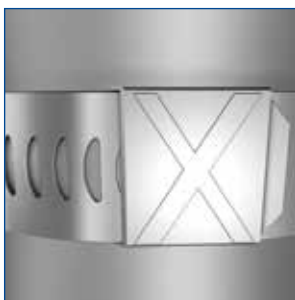
- 1 Slide the loop onto the band in the direction of the arrow and push around the casing.



- 2 Insert the band through the flange slots and around the post.



- 3 Engage the band into the casing and screw the band through, to approx. 50mm.



- 4 Slide any excess band under the loop.



- 5 Tighten the band using an appropriate tool.



- 6 Your Hi torque clamp is well installed now, it can be removed and repositioned if necessary.

NORMA Signage Clamps - Accessories

Stainless steel universal braket



NORMAFIX® STAINLESS STEEL UNIVERSAL BRACKET			
Designation	Product Nr	PU	Price in € per pce.
Stainless steel universal bracket	0560 7620 000	100	562,10

Aluminium braket



NORMAFIX® ALUMINIUM BRACKET			
Designation	Product Nr	PU	Price in € per pce.
Aluminium bracket 82mm	0560 7563 082	50	384,20
Aluminium bracket 120mm	0560 7563 120	50	384,20

Protection tape EPDM



NORMAFIX® PROTECTION TAPE EPDM			
Designation	Product Nr	PU	Price in € per pce.
Protection tape EPDM / 10 mtr.	0560 7640 010	1	1.850,00

Protection tape vulcanizing



NORMAFIX® PROTECTION TAPE VULCANIZING			
Designation	Product Nr	PU	Price in € per pce.
Protection tape vulcanizing 2.4 mtr.	0560 7640 002	1	1.110,00
Protection tape vulcanizing 4.8 mtr.	0560 7640 004	1	1.660,00

T-Screwdriver for Hi-Torque clamps



NORMAFIX® T-SCREWDRIVER FOR HI-TORQUE CLAMPS			
Designation	Product Nr	PU	Price in € per pce.
T-screwdriver for Hi-Torque clamps	0560 6600 001	1	1.590,00



NORMA Group

Postfach 1149 · D-63461 Maintal

Edisonstraße 4 · D-63477 Maintal

Tel: +49 (6181) 4 03-0

Fax: +49 (6181) 4 03-210

www.normagroup.com

info@normagroup.com

This folder supersedes all previous issues. No part of this publication may be reproduced without our prior written consent. In NORMA Group's policy of continual product improvements to meet user needs and technological developments, all models and sets listed in this folder (photographs, specifications, sizes and weights) may be upgraded or discontinued without notice and without any obligation on our part to modify tools or equipment sold previously. The recommendations for use and safety given in this folder do not replace accepted good practice or the safety related legal and regulatory provisions. References to standards implemented at 01/02/2014 are not contractually binding.