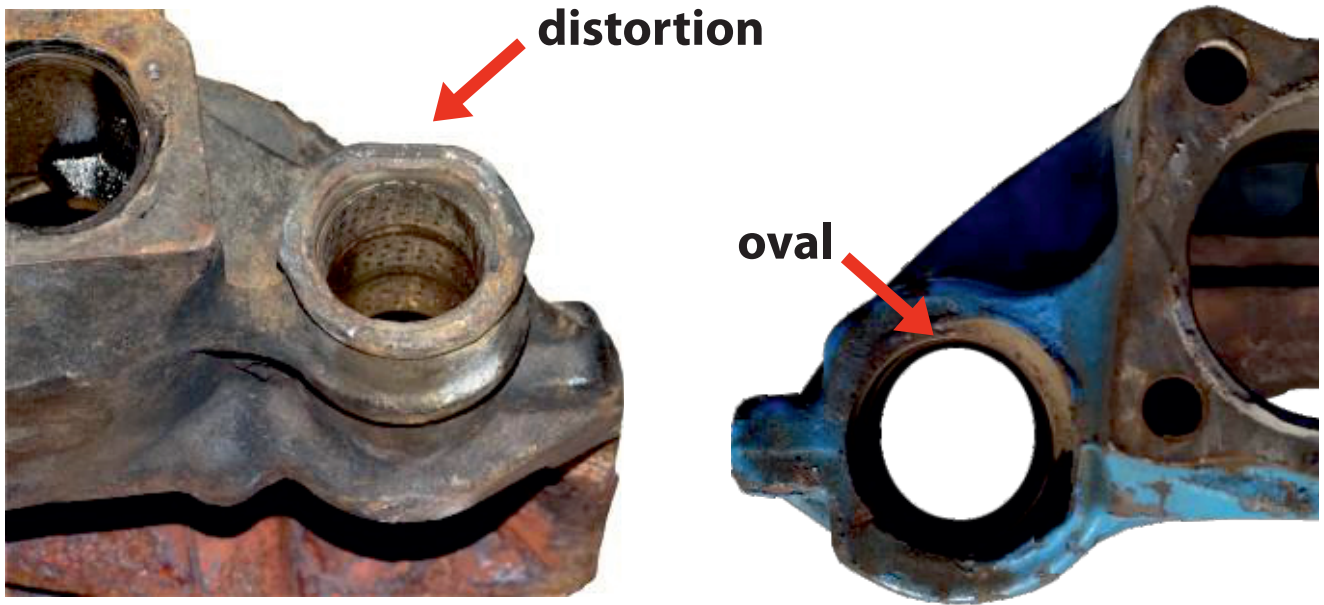


RETURN ACCEPTANCE CRITERIA – BRAKE CALIPERS

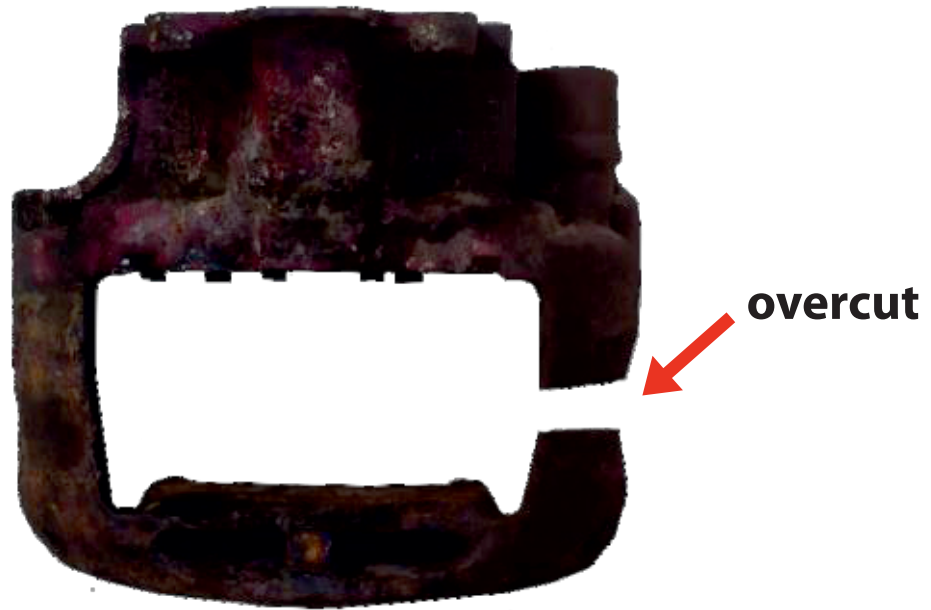
- **distortion**



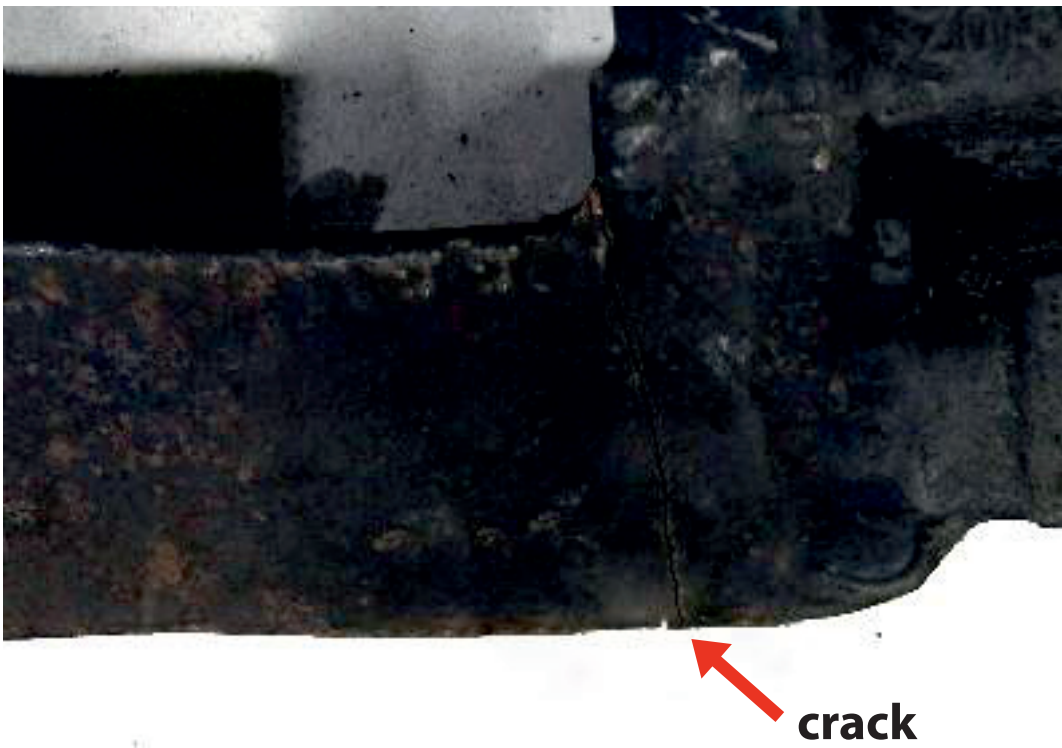
- **burnt/overheated**



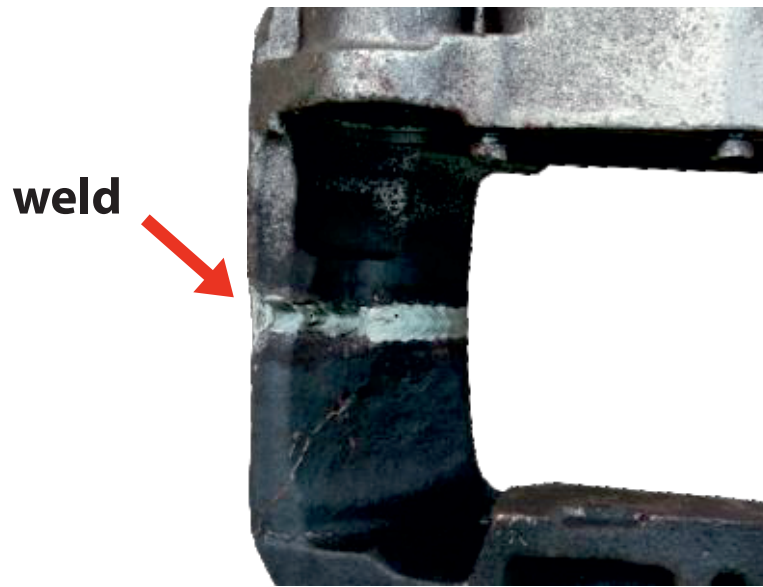
- **overcut**



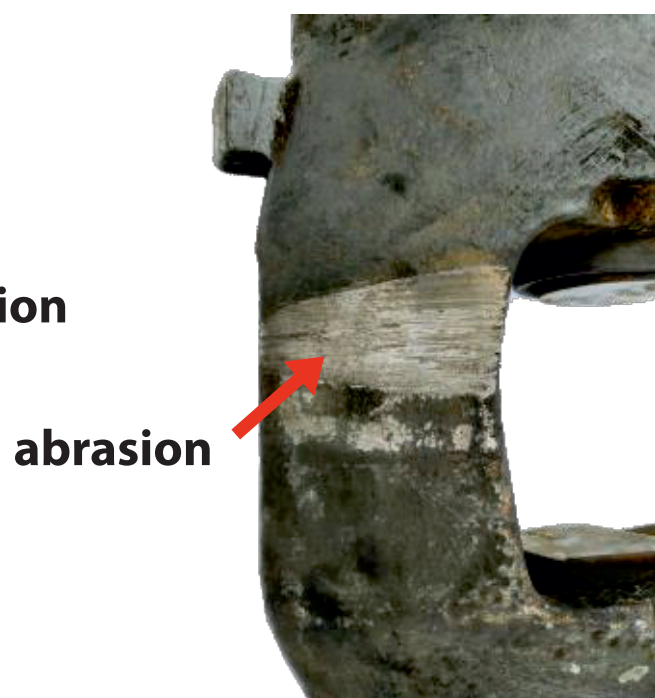
- **crack**



- weld



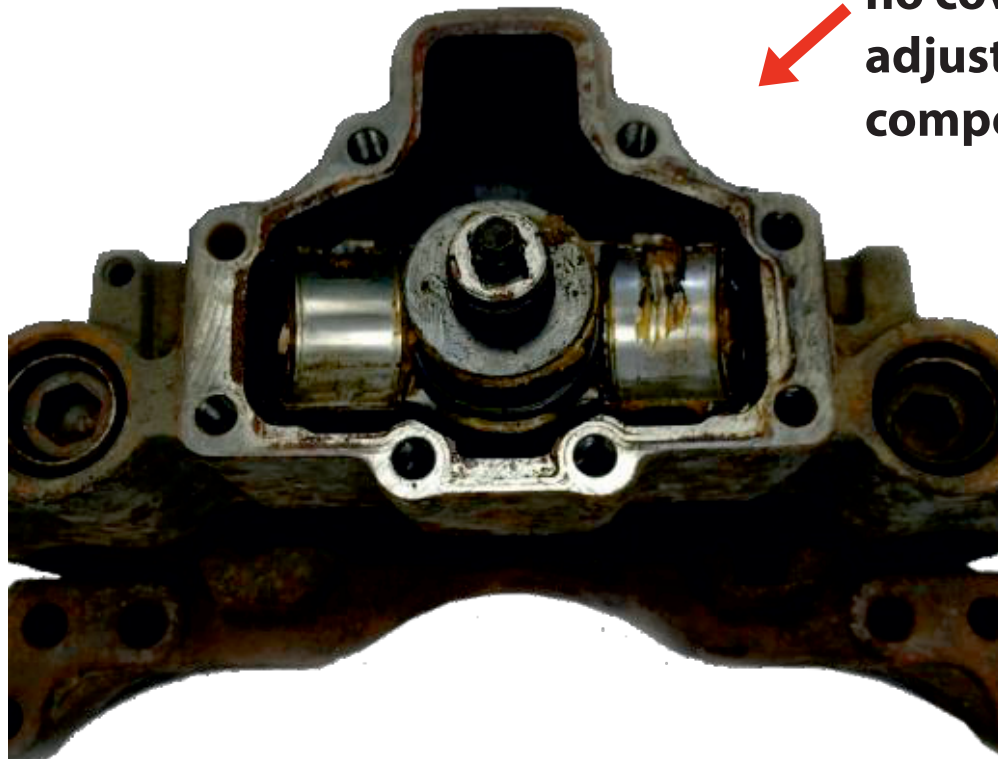
- abrasion



- incomplete case

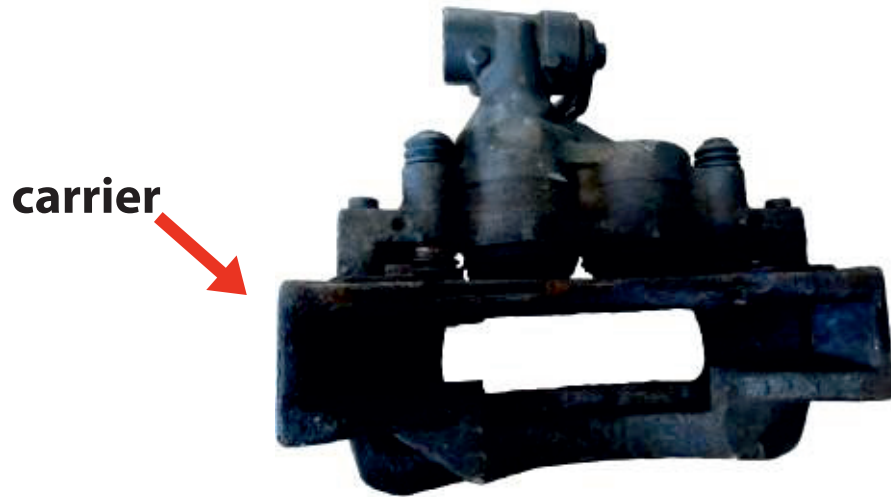


no cover and adjustment components



no cover and adjustment components

- missing carrier, complete with carriers sold



- intersection/crack/weld/abrasion/distortion/burnt/
overheated carrier



BRAKE CALIPER CORE RETURN ACCEPTANCE CRITERIA

Cores would not be accepted if any of the conditions below exist:

- Damage to the caliper body including threaded ports, bleeder screws, piston bores, and slide pin holes.
- Missing mounting brackets, parking brake levers, cable guides, and springs.
- Damaged, bent, broken, burned, scarred or cracked caliper bodies and brackets.
- Mounting and inlet threads stripped or frozen bolts.
- Excessive rust, corrosion or modified bleeders.
- Damaged, or missing components.